

**KANGERDA** Since 1989



# SWITCH

## CONTENTS

- **PUSHBUTTON SWITCH**
- **KNOB SWITCH**
- **KEY SWITCH**
- **POWER KNOB SWITCH**
- **SWITCH ACCESSORIES**
- **INDICTOR**
- **AUTOMOBILE/YACHT ACCESSORIES**

## ROUND HEAD PUSH BUTTON SWITCH

**K3078**



MINIATURE PUSH ON  
BUTTON SWITCH-AUTO  
RESET NORMALLY CLOSE  
TYPE,2P,1A 48VAC,250VAC/1  
MIN

**K3077**



MINIATURE PUSH OFF  
BUTTON SWITCH-AUTO  
RESET NORMALLY OPEN  
TYPE,2P,1A 48VAC,250VAC/1  
MIN

**K3079C/OF**



MINI PUSH BUTTON SWITCH-  
ON-OFF 2P,0.5A 250VAC

**K3079C**



MINI PUSH ON BUTTON  
SWITCH-AUTO RESET  
NORMALLY CLOSE  
TYPE,2P,0.5A 250VAC

**K3079**



MINI PUSH ON BUTTON  
SWITCH-AUTO RESET  
NORMALLY CLOSE TYPE,2P

**K3079F**



MINI PUSH ON BUTTON  
SWITCH-AUTO RESET  
NORMALLY CLOSE TYPE,2P

**K3079ZH**



MINI PUSH ON BUTTON  
SWITCH-AUTO RESET  
NORMALLY CLOSE TYPE,2P

**K3081A**



PUSH BUTTON SWITCH-ON-  
OFF 2P,0.5A 250VAC

**K3080ZJ**



MINI PUSH ON BUTTON  
SWITCH-AUTO RESET  
NORMALLY CLOSE TYPE,2P

**K3080ZJ-L**



LUMINOUS PUSH ON  
BUTTON SWITCH-AUTO  
RESET NORMALLY CLOSE  
TYPE,4P,16MM,10A 250VAC

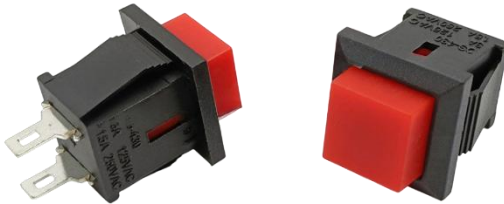
## ROUND HEAD PUSH BUTTON SWITCH



**K3080Z4**

PUSH ON BUTTON SWITCH-AUTO  
RESET NORMALLY CLOSE  
TYPE,3P,16MM,10A 250VAC

## SQUARE HEAD PUSH BUTTON SWITCH



**K3080ZL**

PUSH ON BUTTON SWITCH-AUTO  
RESET NORMALLY CLOSE  
TYPE,2P,1.5A 250V



**K3080Z3**

PUSH ON BUTTON SWITCH-AUTO  
RESET NORMALLY CLOSE  
TYPE,3P,16MM,6VDC/12VDC  
/24VDC/220VAC



**K3080Z3/OF**

PUSH BUTTON SWITCH-ON-  
OFF,3P,16MM,6VDC/12VDC/2  
4VDC/220VAC



**K3080Z3-L**

LUMINOUS PUSH ON  
BUTTON SWITCH-AUTO  
RESET NORMALLY CLOSE  
TYPE,5P,16MM,6VDC/12VDC  
/24VDC/220VAC



**K3080Z3/OF-L**

LUMINOUS PUSH BUTTON  
SWITCH-ON-  
OFF,5P,16MM,6VDC/12VDC/2  
4VDC/220VAC



## METAL FLAT HEAD PUSH BUTTON SWITCH



**K3080Z7/OF-L**

LUMINOUS PUSH BUTTON SWITCH-ON-OFF ,12MM,4P,250VAC,METAL



**K3080Z7-L**

LUMINOUS PUSH ON BUTTON SWITCH-AUTO RESET NORMALLY CLOSE TYPE, 12MM,4P,250VAC,METAL



**K3080Z7/OF-L-22**

LUMINOUS PUSH BUTTON SWITCH-ON-OFF ,6P,22MM,1.5V-220VAC/DC,METAL

## FLAT HEAD PUSHBUTTON SWITCH



**K3080Z5/OF**

PUSH BUTTON SWITCH-ON-OFF,4P,22MM,10A 440VAC,ABS



**K3080Z5/OF-L**

LUMINOUS PUSH BUTTON SWITCH-ON-OFF,4P,22MM,12V/24/110V/220V/380V,ABS



**K3080Z6/OF**

PUSH BUTTON SWITCH-ON-OFF,4P,22MM,10A 440VAC,ABS



**K3080Z6/OF-L**

LUMINOUS PUSH BUTTON SWITCH-ON-OFF,4P,22MM,12V/24/110V/220V/380,ABS

## MUSHROOM PUSH BUTTON SWITCH



**K3080Z8/OF**

PUSH BUTTON SWITCH-ON-OFF,4P,22MM,10A-380V,ABS



**K3080Z9/OF**

PUSH BUTTON SWITCH-ON-OFF,4P,22MM,10A 440VAC,ABS

## EMERGENCY STOP SWITCH



**K3080Z16/OF-L**

LUMINOUS  
EMERGENCY STOP  
SWITCH-ON-  
OFF,6P,22MM,DC12V/2  
4V,AC220V/380V,ABS



**K3080Z16/OF**

EMERGENCY STOP SWITCH-  
ON-  
OFF,6P,22MM,380VAC,ABS



**K3080Z17/OF**

EMERGENCY STOP SWITCH-  
ON-OFF,6P,22MM,10A  
440VAC,ABS

## DUAL BUTTON SWITCH



**K3080Z18-L**

LUMINOUS DUAL PUSH ON  
BUTTON SWITCH-AUTO  
RESET NORMALLY CLOSE  
TYPE,4P,22MM,10A  
440VAC,ABS



**K3080Z19-L**

LUMINOUS DUAL PUSH ON  
BUTTON SWITCH-AUTO  
RESET NORMALLY CLOSE  
TYPE,4P,22/25MM,24/110/2  
20/380VAC,ABS



**K3080Z20-L**

LUMINOUS DUAL PUSH ON  
BUTTON SWITCH-AUTO  
RESET NORMALLY CLOSE  
TYPE,4P,22/25MM,24/110/2  
20/380VAC,ABS



**K3080Z21-L**

LUMINOUS DUAL PUSH ON  
BUTTON SWITCH-AUTO  
RESET NORMALLY CLOSE  
TYPE,4P,30MM,24/110/220/  
380VAC,ABS

## GAME CONSOLE BUTTON SWITCH

**K3080ZZA(33MM)  
K3080ZZB(44MM)  
K3080ZZC(61MM)**

PUSH ON BUTTON  
GAME SWITCH-AUTO  
RESET NORMALLY  
CLOSE  
TYPE,4P,33/44/61MM,1  
2VAC,ABS



**K3080ZZA-L(33MM)  
K3080ZZB-L(44MM)  
K3080ZZC-L(61MM)**

LUMINOUS PUSH ON  
BUTTON GAME  
SWITCH-AUTO RESET  
NORMALLY CLOSE  
TYPE,4P,33/44/61MM,1  
2VAC,ABS





## KNOB SWITCH



**K3080Z11/OF**

KNOB SWITCH-ON-OFF,4P,22MM,660VAC,METAL



**K3080Z10/OF**

KNOB SWITCH-ON-OFF,4P,22MM,380VAC,METAL



**K3080Z12/OF**

KNOB SWITCH-ON-OFF,4P,22MM,10A 440VAC,ABS



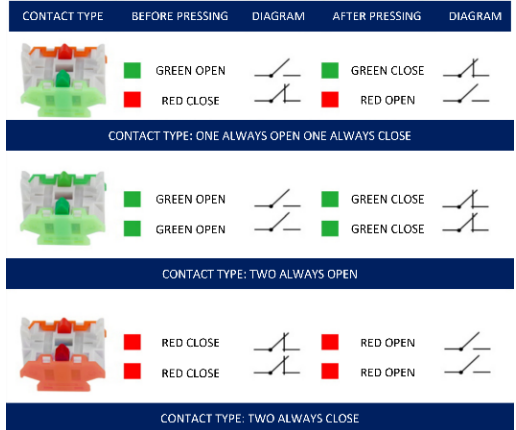
**K3080Z13/OF**

KNOB SWITCH-ON-OFF,4P,22MM,10A 440VAC,ABS



**K3080Z10/OF-L**

LUMINOUS KNOB SWITCH-ON-OFF,4P,22MM,12V/24V/110V/220V/380V,METAL



## KEY SWITCH



**K3080Z14/OF**

KEY SWITCH-ON-OFF,4P,22MM,10A 660VAC,ABS



**K3080Z15/OF**

KEY SWITCH-ON-OFF,4P,22MM,10A 440VAC,ABS

## POWER KNOB SWITCH



**K3080Z22-3P**

POWER KNOB SWITCH-2  
POSITION,3P,DC220V,AC  
380VAC,ABS



**K3080Z22-4P**

POWER KNOB SWITCH-  
2POSITION,4P,DC220V,AC  
380VAC,ABS



**K3080Z23-1  
K3080Z23-2  
K3080Z23-3**

POWER KNOB SWITCH-  
3POSITION,1/2/3T,16A  
380V,ABS



**K3080Z24-2  
K3080Z24-3  
K3080Z24-4**

POWER KNOB SWITCH-  
3POSITION,2/3/4T,20A

## BUTTON SWITCH ACCESSORIES



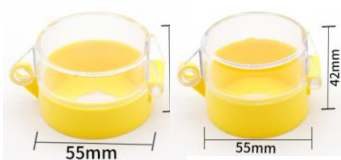
**K8080-NP-A-40  
K8080-NP-A-60**

BUTTON SWITCH  
WARNING NAME  
PLATE,40/60MM



**K8080-NP-B-16  
K8080-NP-B-22  
K8080-NP-B-30**

BUTTON SWITCH NAME  
PLATE  
BUCKLE,16/22/30MM



**K8080-NP-C-37  
K8080-NP-C-42**

BUTTON SWITCH  
PROTECTIVE COVER,  
37/42MM



**K8080-WB-C-1  
K8080-WB-C-2  
K8080-WB-C-3  
K8080-WB-C-4  
K8080-WB-C-5  
K8080-WB-C-6**

BUTTON SWITCH  
WATERPROOF  
BOX,IP65,1/2/3/4/5/6  
HOLE

## METAL LED INDICATOR



**K3076**

LED SIGNAL INDICATOR LAMP-  
8MM,12V/24V/110V/220V,M  
ETAL



**K3076-A**

LED SIGNAL INDICATOR LAMP-  
16/19/22MM,12V/24V/110V/  
220V/380V,METAL,WATERPR  
OOF/EXPLOSION-PROOF  
LED

## ROUND LED INDICATOR



**K3060-A**

LED POWER INDICATOR LAMP-  
30MM,DC24-48V/AC220-  
380V,METAL,WATERPROOF/EX  
PLOSION-  
PROOF/ANTICORROSION



**K3064**

SIGNAL INDICATOR LAMP-  
13.5MM,12V/24V/110V/220V



**K3075F**

LED SIGNAL INDICATOR LAMP-  
10/12/16MM,380V



**K3075F-A**

LED SIGNAL INDICATOR LAMP-  
16MM,12V/24V/110V/220V/  
380V



**K3075F-B**

LED POWER INDICATOR LAMP-  
22MM,DC24-48V/AC110-  
220V/AC220-380V



**K3075F-C**

TWO-TONE LED POWER  
INDICATOR LAMP-  
GREEN/RED,22MM,DC24-  
48V/AC110-220V/AC220-  
380V



**K3075F-D**

FLASH/BUZZER LED ALARM  
LAMP-  
16MM,12V/24V/36V/48V/110  
V/220V/380V



**K3075F-E**

FLASH/BUZZER LED ALARM  
LAMP-30MM,24V/220V/380V



## VOLTAGE AND CURRENT FREQUENCY INDICATOR



### K3075-H

MINI DIGITAL DISPLAY  
AC VOLTAGE  
INDICATOR LAMP-  
22MM,RANGE:24V-  
500VAC,ROUND



### K3075-I

MINI DIGITAL DISPLAY  
CURRENT INDICATOR  
LAMP-22MM,RANGE:0-  
100A,ROUND



### K3075-K

MINI DIGITAL DISPLAY  
FREQUENCY INDICATOR  
LAMP-22MM,RANGE:0-  
99HZ,ROUND



### K3075-L

MINI DIGITAL DISPLAY AC  
VOLTAGE INDICATOR LAMP-  
22MM,RANGE:24V-  
500VAC,SQUARE

## LED WARNING LIGHT/ALARM



### KWL-001

MULTI-LAYER LED  
WARNING ALARM  
LIGHT TOWER-  
AUDIBLE/VISUAL,110db  
,24V,1/2/3/4/5 LAYER



### KWL-003

LED WARNING ALARM  
LIGHT-AUDIBLE/VISUAL,  
120db,12/24/24V, SCREW  
MOUNTED



### KWL-002

ROTATING STROBOSCOPIC  
LED WARNING LIGHT-CAR  
CEILING SCREW  
MOUNTED  
TYPE,ROUND,12-60V



### KWL-004

MINI STROBOSCOPIC  
LED WARNING LIGHT-  
12/24/24V,WATERPRO  
OF,SCREW MOUNTED



16/80003/6



## COMBINATION PANEL



16/80003/6

6P YACHT COMBINATION MOUNT PANEL-12-24V,ROCKER SWITCH/INDICATOR LIGHT/OVERLOAD PROTECTOR,WATERPROOF



16/80001

YACHT COMBINATION MOUNT PANEL-12-24V,6XROCKER SWITCH/LIGHTER/DUAL USB-A CHARGER/VOLTMETER,WATERPROOF



16/80003/4

4P YACHT COMBINATION MOUNT PANEL-12-24V,ROCKER SWITCH/INDICATOR LIGHT/OVERLOAD PROTECTOR,WATERPROOF



16/80002

YACHT COMBINATION MOUNT PANEL-12-24V,5XROCKER SWITCH/LIGHTER/DUAL USB-A CHARGER/VOLTMETER,WATERPROOF

## PANEL MOUNT



16/70001

YACHT CHARGER MOUNT PANEL-1/2/3/4,ABS,WATERPROOF



16/70002

YACHT ROCKER SWITCH MOUNT PANEL-2/3/4/5/6,ABS,WATERPROOF

## ROCKER SWITCH



16/21001

LUMINOUS FOG LAMP  
CENTRAL CONTROL  
SWITCH-  
W/HARNESS,24V 15A



16/22001

LUMINOUS HORN  
SWITCH-AUTO RESET,SPST  
(ON)-OFF,12V 20A /24V  
10A,WATERPROOF



16/22002

LUMINOUS STEERING  
SWITCH-ON-OFF-  
ON,12V 20A/24V  
10A,WATERPROOF



16/22003

LUMINOUS SWITCH-TWO  
LAMP,IDENTIFICATION OF  
DIFFERENT  
FUNCTIONS,12V 20A/24V  
10A,WATERPROOF



16/23001

LUMINOUS POWER  
WINDOW LIFTING  
SWITCH-SPST,12V 20A  
/24V 10A,WATERPROOF



16/23001

LUMINOUS HIGH/LOW  
BEAM SWITCH-ON-ON,24V  
15A,WATERPROOF



16/23003

LUMINOUS AUTOMOBILE  
HIGH/LOW BEAM  
SWITCH-ON-OFF,24V  
15A,WATERPROOF



16/23004

LUMINOUS WINCH  
SWITCH-12V 20A/24V  
10A,WATERPROOF



16/24001

LUMINOUS POWER  
WINDOW LIFTING  
SWITCH-SPST,12V 20A  
/30V 10A,WATERPROOF



16/24011

LUMINOUS FOG LAMP  
SWITCH-12V 35A



## ROUND SWITCH



16/30001

TRACTOR LAMP/HORN SWITCH



16/30002

ONE BUTTON START SWITCH-12V 50A



16/30003

LUMINOUS ROUND ROCKER SWITCH-36MM,PANEL MOUNT TAPE W/HARNESS,3P,12V 20A,WATERPROOF



16/30004

LUMINOUS ROUND ROCKER SWITCH-23MM,PANEL MOUNT TYPE,3P,12V 16A,WATERPROOF

## CHARGER BASE



16/40001

LUMINOUS DUAL USB-A CHARGER BASE-I/P:12-24V,O/P:5V 3.1A,WATERPROOF



16/40002

LUMINOUS PD TYPE-C/QC 3.0 USB-A CHARGER BASE-W/VOLTMETER,I/P:12-24V,O/P:5V 4.8A,WATERPROOF

## VOLTMETER/AMMETER



16/050001

MOTORBOAT BATTERY LED DIGITAL DISPLAY VOLTMETER/AMMETER-RANGE:5-48V,I/P:0-24V,O/P:5V,WATERPROOF



16/050002

MOTORBOAT TOUCH SCREEN POWER INDICATOR/VOLTMETER-RANGE:5-48V,I/P:12-24V,O/P:5V,WATERPROOF

## CIGARETTE LIGHTER



16/60002

AUTOMOBILE CIGARETTE LIGHTER SOCKET-I/P:12/24V,O/P:12V 50A 120W,WATERPROOF



16/60003

AUTOMOBILE CIGARETTE LIGHTER SOCKET-I/P:12/24V,O/P:12/24V 200W,WATERPROOF



## BATTERY SWITCH



16/90001

BATTERY POWER OFF  
POTECTION ROTARY  
SWITCH



16/90002

BATTERY POWER OFF  
POTECTION KNOB  
SWITCH



16/90003

HIGH POWER BATTERY  
CIRCUIT BREAKER-3  
WAY



16/90004

BATTERY POWER OFF  
ROTARY SWITCH-  
M8/M10



16/90005

BATTERY POWER OFF  
SWITCH-200A



16/90006

QUICK PULL TYPE  
BATTERY CLAMP



16/90007

BATTERY DISTRIBUTION  
PILE HEAD BOX-  
1XM8/2XM5



16/10001

CAR AUDIO POWER  
PROTECTION CIRCUIT  
BREAKER FUSE  
HOLDER-AUTO  
RESET,50-300A

## FUSE HOLDER



16/10002

ATC FUSE HOLDER BOX  
BRACKET W/LED LAMP-  
12WAY



16/10003

ATC FUSE HOLDER BOX  
BRACKET W/LED LAMP-  
6WAY



16/10004

FUSE HOLDER BOX  
W/NEGATIVE OVERLOAD  
PROTECTOR-6 WAY



16/10005

ATC FUSE HOLDER  
CONTROL BOX W/RELAY  
CIRCUIT